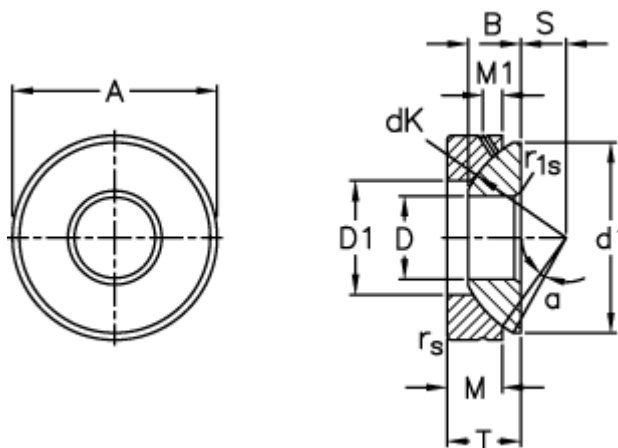


Article number: 03511030

Description: Fluro Rod end GE 30AX

Measures



A	= 75 0 -0,013	M1	= 8
B	= 19	rs, r1s min	= 1
D	= 30 0 -0,010	S	= 17.5
d1 max	= 70	Static axial load C0 (kN)	= 850
D1 min	= 42	T	= 26 +0,25 -0,40
dK	= 82	Tilt angle	= 5
Dynamic axial load C (kN)	= 170	Weight	= 614
M	= 19		